

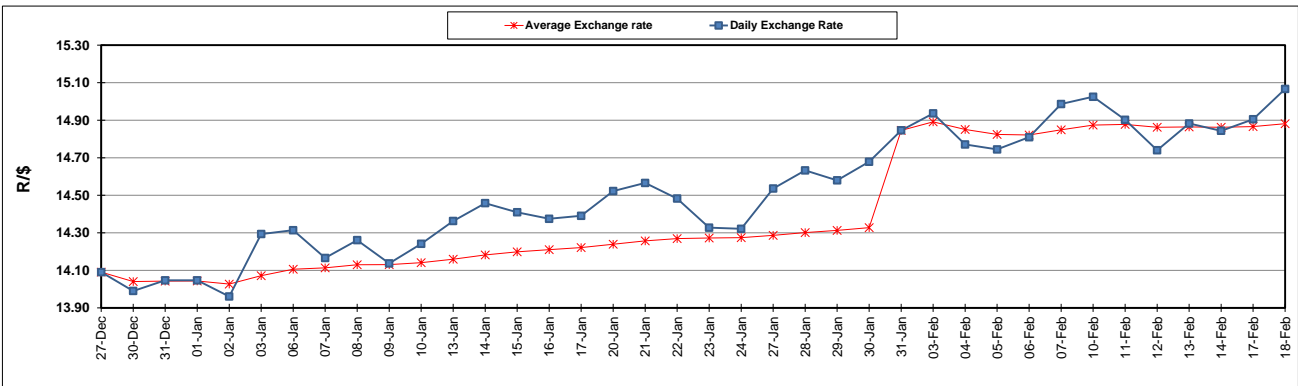
	PETROL 95 ULP	PETROL 93 ULP & LRP	DIESEL 0.05%	DIESEL 0.005%	ILL. PAR.
GAUTENG PUMP PRICE (SA c/l) AS FROM 05/02/2020	1,603.000	1,571.000	-	-	-
WHOLESALE PRICE (SA c/l) AS FROM 05/02/2020	-	-	1,457.260	1,462.660	924.728
SINGLE NATIONAL MAXIMUM RETAIL PRICE	-	-	-	-	1,176.000
BASIC FUEL PRICE - 18/02/2020 (SA c/l)	679.805	666.659	692.613	697.665	673.400
PRESS RELEASE CONTRIBUTION TO BFP 05/02/2020 - 18/02/2020 (SA c/l)	686.970	664.970	737.630	743.030	734.128
UNIT OVER/(UNDER) RECOVERY - 18/02/2020 (SA c/l)	7.165	(1.689)	45.017	45.365	60.728
AVERAGE BASIC FUEL PRICE 31/01/2020 - 18/02/2020	668.715	657.083	686.403	692.426	670.101
AVERAGE UNIT OVER/(UNDER) RECOVERY 31/01/2020 - 18/02/2020	21.255	10.887	52.381	51.757	64.720

ANALYSIS MOVEMENT OF AVERAGE OVER/(UNDER) RECOVERY

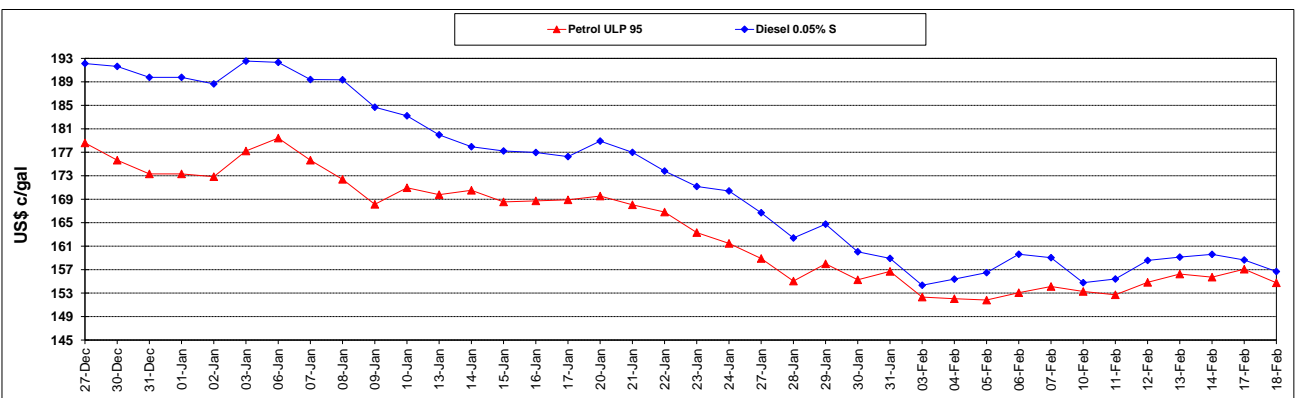
	PETROL 95	PETROL 93	DIESEL 0.05%	DIESEL 0.005%	ILL. PAR.
- MOVEMENT IN INTERNATIONAL PRODUCT PRICES	46.141	35.340	77.925	77.526	89.656
- MOVEMENT IN EXCHANGE RATE	(24.886)	(24.453)	(25.544)	(25.768)	(24.937)
AVERAGE UNIT OVER/(UNDER) RECOVERY 31/01/2020 - 18/02/2020	21.255	10.887	52.381	51.757	64.720

R/\$ EXCHANGE RATE - (R/\$15.0664 - 18/02/2020)

EXCHANGE RATE USED IN BASIC FUEL PRICE



INTERNATIONAL PRODUCT PRICES OF BASKET USED IN BASIC FUEL PRICE



BASIC FUEL PRICE IN SA CENTS PER LITRE

